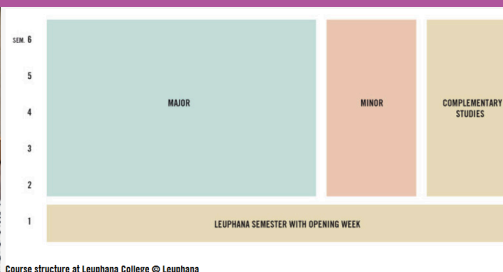
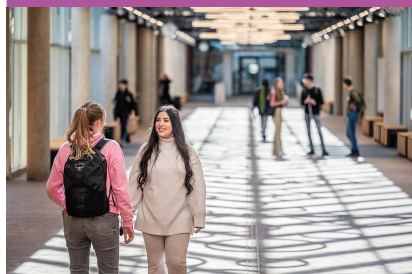


International Business Administration and Entrepreneurship

Leuphana Universität Lüneburg
Bachelor of Arts



Program

Why study International Business Administration and Entrepreneurship at Leuphana College?

The International Business Administration and Entrepreneurship BSc (Joint Hons) prepares you for the functional areas of business. You deal with basic and in-depth issues concerning business activities, economic processes, and the complex interconnections of managerial and entrepreneurial actions in an international environment. The aim of this program is to help and support you on your way to developing a broad understanding of business, to building up an entrepreneurial skills set, and acquiring the leadership competencies you need to respond to the challenges and problems humanity in general, and businesses in particular, face in the 21st century.

General information

Final degree: Bachelor of Science
Extent: 180 CP according to ECTS
Standard course length: 6 semesters
Beginning of the course: October of each year (winter semester)
Teaching and assessment language of the main subject: English
Tuition fees: None
Semester contribution: approx. EUR 320
Admission restriction: yes



[Link to the study program](#)
[Application and admission](#)
[College's Student Counselling Service](#)
[International Office](#)
[Living in Lüneburg](#)

Entry / Residence / Accommodation

Claudia Wölk
 International Office
 Leuphana Universität Lüneburg
 Universitätsallee 1, 21335
 Lüneburg
 Fon +49.4131.677-1072
cwoelk@uni.leuphana.de

[To the website of the Bachelor program International Business Administration and Entrepreneurship >](#)

Structure

What is the structure of the Bachelor program International Business Administration and Entrepreneurship?

The International Business Administration and Entrepreneurship BSc (Joint Hons) begins with the Leuphana Semester, which you complete together with the other first-year students at College. In this interdisciplinary first semester you will acquire the basics of a scientific course of study and at the same time receive an introduction to your International Business Administration and Entrepreneurship major.

Starting in the second semester, you supplement your International Business Administration and Entrepreneurship major with a minor – a second field of knowledge, such as Philosophy, Popular Music Studies, Psychology and Society or Economics. Your minor allows you to specialise specifically or to expand your International Business Administration and Entrepreneurship major by an interdisciplinary field of application.

Parallel to your major (main subject) and minor (subsidiary subject), you will take courses in Complementary Studies. Complementary Studies allow you to test ways of thinking and working in other disciplines and in this way increase your interdisciplinary competences: For example, you

can attend seminars on biodiversity and sustainable development or experience project management up close when organising a music festival.

Perspectives

How to apply at Leuphana College?

The Bachelor degree programme at Leuphana College can only be started in the winter term (1st of October until 31st of March). If you would like to complete a Bachelor degree at Leuphana College but do not have a German university entrance qualification, you must apply via the application service for international students, uni-assist, in Berlin.

The College runs a two-stage admission process for applicants from European Union (EU) and European Economic Area (EEA). In the first stage, extra-curricular accomplishments are also taken into account alongside your university entrance qualification grade. You can increase your chances of admission by taking an admission test in stage 2.

Applicants from countries outside the EU and the EEA are admitted exclusively on the basis of the average grade of their university entrance qualification.

What is special about the Hanseatic City of Lüneburg?

Lüneburg is one of the most fascinating towns in North Germany. Its historic architecture stands in charming contrast to the lively, young urban life. Lüneburg is a university town and home to 9,000 students who play a major role in public life. Should you occasionally crave the big city life, the busy metropolis of Hamburg is only a thirty-minute train ride away.

Wirtschaftswissenschaften